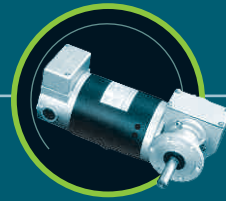
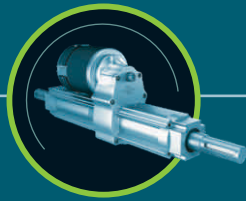
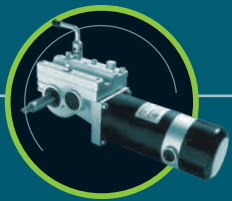




## WORLD OF D. C. MOTORS





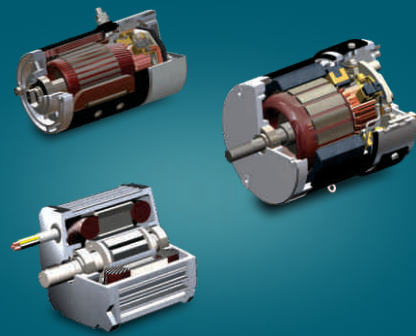
Rotomag and its group companies, comprising of 4 brands have been manufacturing high performance D.C. and A.C. motors as well as gearboxes and electric drive systems for over 20 years.

We have built our design and manufacturing expertise by working closely with demanding global customers and through the knowledge transfer from our European joint venture partners. Our processes and quality are continuously upgraded along with the expansion of our manufacturing infrastructure.

In addition to our range of over 500 types of permanent magnet DC and wound field DC motors, we offer geared motors, transaxles, wheel drives for a wide range of industries and applications.

## CORE TECHNOLOGIES

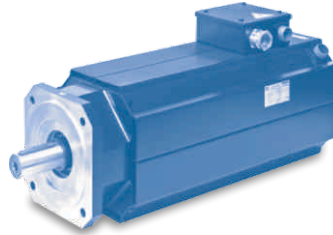
Rotomag has expertise, jointly with our group companies, in diverse motor technologies. We can custom design permanent magnet DC motors, series and shunt wound DC motors, brushless DC motors and controllers for such motors. These motors in tandem with worm, helical and planetary gear heads enable us to offer a wide variety of electric drive systems.





**Rotomotive Powerdrives India Ltd**, joint venture with Motive Srl, Italy manufactures AC motors, special purpose motors, helical, worm and bevel-helical gearboxes.

[www.rotomotive.com](http://www.rotomotive.com)



**Magtor Servomotion Pvt. Ltd**, joint venture with Magnetic Srl, Italy manufactures AC servo motors, vectorial motors, servo drives, BLDC motors.

[www.magtor.com](http://www.magtor.com)



**Rotosol**, a solar pump division of Rotomag manufactures ultra efficient surface and submersible solar pumps based on BLDC and PMDC technology.

[www.rotosol.solar](http://www.rotosol.solar)

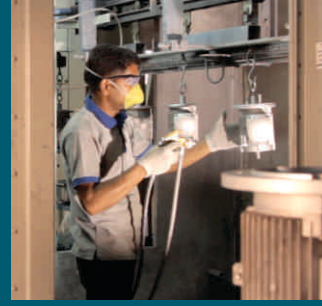




## BENCHMARKED PROCESSES

Our three plants, having a floor area of over 20,000 sq meters, have state-of-the-art processes and manufacturing facilities. Lean manufacturing with assurance of ISO 9001 certified quality systems ensures consistent quality, production flexibility and control of process variability. All key processes are validated using FMEA and process capability studies.

Processes like controlled magnetizing, trickle impregnation, Resiglas banding, laser mica undercutting, dual flyer winding, dynamic balancing enable us to build product reliability through our manufacturing processes.



**20K**  
sq m  
Area

**140**  
Employees

**24**  
Engineers

**35%**  
CAGR in  
sales

**500+**  
Unique  
products

**50+**  
New products  
every year

**30+**  
Countries  
export

CE, ROHS  
compliant

# ROTOMAG ADVANTAGES

## Product Development Skills

Our core strength lies in application engineering and translating the application data into PMDC motors, series, separately excited and geared motors.



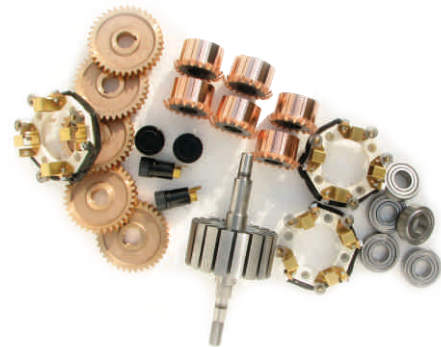
## Multiple technologies & Applications

Our exposure to various technologies, including those of our group companies covering a wide spectrum of applications enable us to design and build customised solutions very quickly and meet the performance and quality expectations of our discerning customers.



## World class supply chain

Our suppliers are some of the best in India and in the world. Long term agreements with our dedicated suppliers enables us to meet the cost and quality goals of our customers.



## International Exposure

We export to over 30 countries and have an experience of working with customers who are leaders in their business. Prompt communications, visual reports, close interface between our development engineers and those of our customers make it easy for our customers to do business with us.

## Quality systems and IT enabled manufacturing

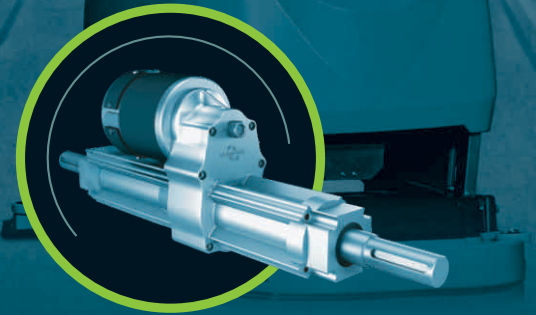
We are an ISO 9001 company and extensively use IT tools like bar coding, laser marking, ERP, CRM and Sharepoint services to ensure that our operations are consistent and efficient.



## PRODUCTS AND APPLICATIONS

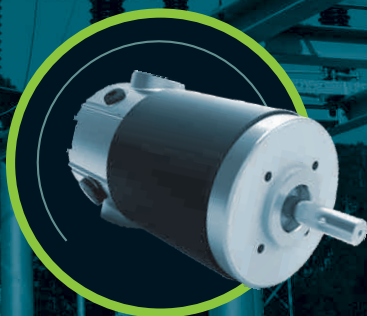
Our wide range of permanent magnet DC motors, would field DC motors, brushless DC motors and electronic controllers have been designed to operate most efficiently and reliably for variety of applications. We continuously improve our products through sustained endurance and type testing, often jointly with our customers.

### MOTORS FOR FLOOR CARE



Page 8-9

### SWITCHGEAR / DISCONNECTOR MOTORS



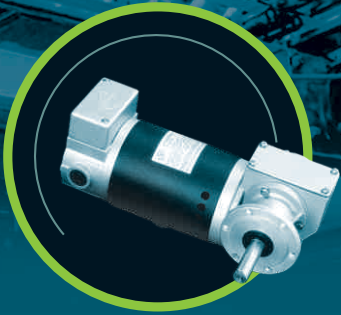
Page 12

### HOIST AND WINCH MOTORS



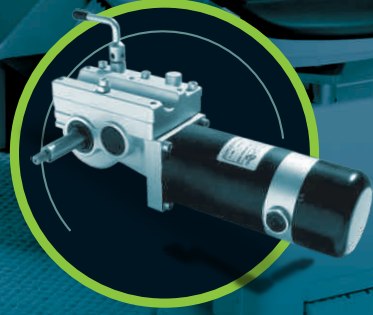
Page 13

**INDUSTRIAL DC  
AND AUTOMATION  
MOTORS**



Page 10

**STAIRLIFT  
AND MOBILITY  
MOTORS**



Page 11

**MOTORS FOR  
HYDRAULIC  
POWER PACKS**



Page 14

**MOTORS FOR  
MATERIAL  
HANDLING**



Page 15

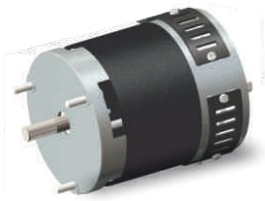
## MOTORS FOR FLOOR CARE

Rotomag offers a range of brush motors, drive motors and transaxles for floor care equipment. These motors have several unique features that result in compact, efficient solutions and are available with worm and helical gear heads as well as ungeared versions. The transaxles have oversized bearings and precisely ground helical gears and lapped bevel gears.

## ADVANTAGES

- R**ibbed aluminium housings for improved reliability
- A**nti-corrosion powder coated body
- H**elical gears ground to Din class 7
- P**ermanently lubricated bearings
- L**ow noise
- E**asy replacement, long life brushes

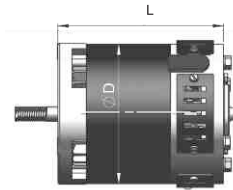
## BRUSH MOTORS-UNGEARED



### AB/HK SERIES

Available in TENV-TEFC-SPDP  
 Protections Option: IP-20, IP-44, IP-54

*\*Diameter & length mentioned suitable for 1500RPM  
 Speed range: 1000 RPM to 3500 RPM*



Power( KW)	Voltage	D	*L
0.08	12V-24V- 36V-48V	89	143
0.12		89	161
0.18		114	200
0.37		114	220
0.56		114	260
0.75		114	300

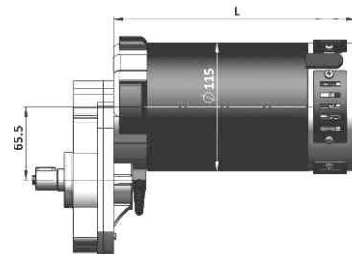
## BRUSH MOTORS-GEARED



### RM SERIES

Ratio: 1:10  
 Available in TENV-TEFC-SPDP  
 Protections Option: IP-20, IP-44

*\* Length mentioned is suitable for 150RPM  
 Speed range: 100 RPM to 300 RPM*



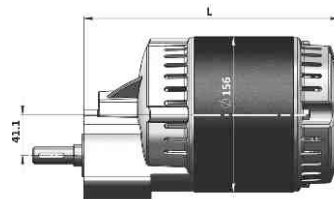
Power( KW)	Voltage	*L
0.18	12V-24V-36V- 48V	205
0.37		225
0.56		245
0.75		265



### TNT SERIES

Ratio: 1:5.2  
 Type-SPDP  
 Protection: IP-20

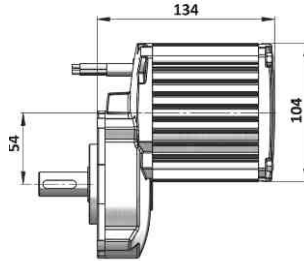
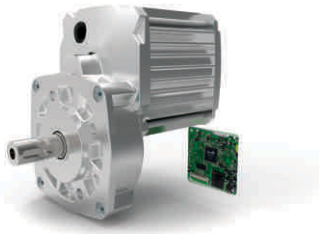
*\*Length mentioned is suitable for 200RPM  
 Speed range :200 RPM to 600 RPM*



Power( KW)	Voltage	*L
0.56	24V-36V-48V	256
0.75		256
1.1		278



## BRUSHLESS D C MOTORS

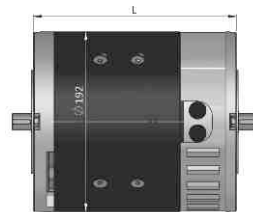


### BD SERIES

Speed :180 RPM

Power (KW)	Voltage	D	Speed (RPM)
0.53	24V	104	180

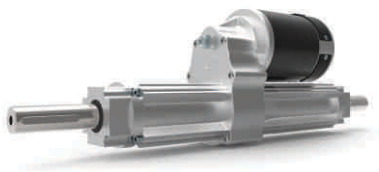
## DRIVE AND TRANSAXEL MOTORS



### HWA SERIES

Available in TENV-TEFC-SPDP  
 Protections Option: IP-20, IP-44, IP-54  
*\*Shown length consider for 1800 RPM*  
 Speed range: 1000 RPM to 3500 RPM  
 Shunt wound motor

Power (KW)	Voltage	L
0.75	36V-48V	216
1.5		323
2.2		430



### JTA SERIES

Ratio: 1:18.85  
 Available in TENV-SPDP  
 Protections Option: IP-20, IP-44, IP-54  
 Speed range: 65 RPM to 160 RPM

Power (KW)	Voltage	L
0.1 to 0.45	12V-24V-36V	185 to 395

OPTIONS

**Brake**

**Ferrite Core**

**Special Connectors**

**Terminal Bolt**

**Special Shaft**

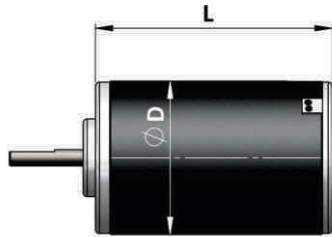
More Customisation options on request

# INDUSTRIAL DC AND AUTOMATION MOTORS

Rotomag's Permanent Magnet D.C. Motors for use in automation are specially designed for continuous operation and frequent start-stops and reversals. TEFC/TENV construction with IP-44/ IP-55 protection make them suitable for use in ambients till 45°C.

## ADVANTAGES

- Use of high coercivity PATENTED magnets prevents demagnetization even in conditions which involve frequent start-stops
- Externally replaceable brushes
- Window for cleaning of commutator
- Prevision balancing for low noise and vibration
- Higher quality SKF ball bearings

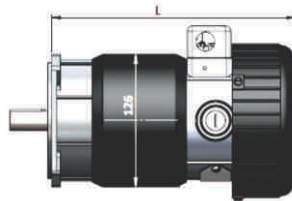
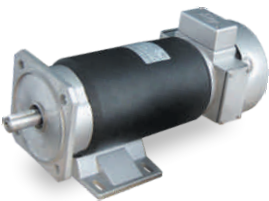


### R-CT SERIES

Available in TENV-TEFC-SPDP  
 Protections Option: IP-20, IP-44  
 S1, S2, S3 Duty cycle

\*Length mentioned suitable for 1500RPM  
 Speed range: 1000 RPM to 3500 RPM

Power (KW)	Voltage	D	*L
15	12V-24V	63	88
30		63	122
50		63	152
40		75	121
60		75	151

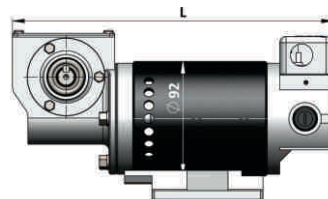
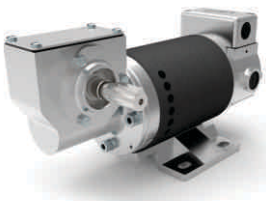


### M SERIES

Available in TENV-TEFC-SPDP  
 Protections Option: IP-20, IP-44  
 S1, S2, S3 Duty cycle IEC  
 Frame Mounting

\*Length mentioned suitable for 1500RPM  
 S1-TEFC motor Speed range:  
 1000 RPM to 3500 RPM

Power (KW)	Voltage	*L
0.18	12V-24V-36V-	245
0.37	48V-90V-110V-	265
0.75	180V-220V	345



### S1NR-S2NR

Ratio: 16, 32, 55  
 Available in TENV-SPDP  
 Protections Option: IP-20, IP-44  
 S1, S2, S3 Duty cycle  
 Speed range: 60 RPM to 220 RPM

Power (KW)	Voltage	*L
0.075	12V-36V-	225
0.18	48V-90V-110V- 180V-220V	257

## OPTIONS

### Planetary Gearbox



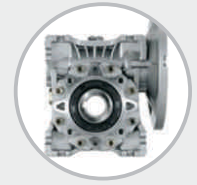
### Inline Helical Gearbox



### Worm Gearbox



### Worm-box type



### Brake



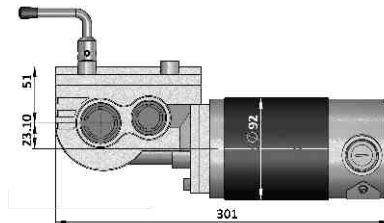
**More Customisation options on request**

# STAIRLIFT AND MOBILITY MOTORS

Motors for marine winches and hoists are made for S2 intermittent duty and special features to withstand very high starting current. Bodies are powder coated to withstand the corrosive effects of the humid marine environment.

## ADVANTAGES

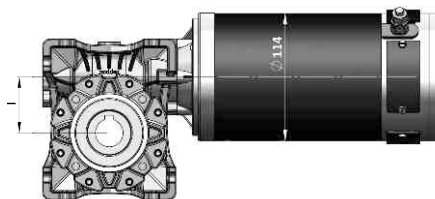
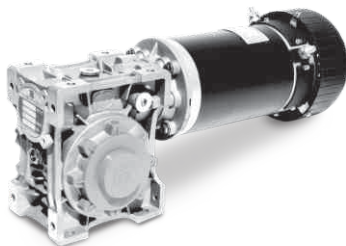
- Rugged brush holders
- High conductivity brushes
- Very high starting current
- Brazed winding joints
- Powder coated externally



### WH SERIES

Ratio: 32  
 Protections Option: IP-44, IP20

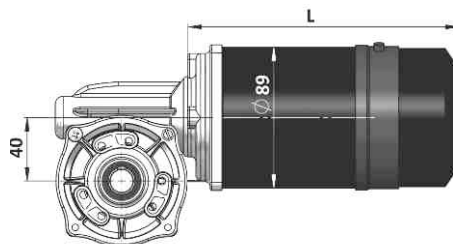
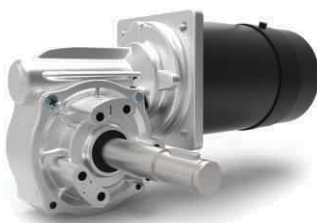
Power (KW)	Voltage	Speed (RPM)
0.28	24V	25



### HK SERIES

Ratio: 7.5, 10, 15, 20, 25, 30, 40, 50, 60, 80, 100  
 Protection: IP-44, IP-20

Power(KW)	Voltage	D	I	Speed(RPM)
0.18 to 0.75	12V-24V 36V-48V	114	40, 50, 63, 75	10 to 400



### RMP SERIES

Ratio: 18  
 Protections Option: IP-44, IP-20

Power (KW)	Voltage	*L
0.15	24V-36V-48V	154
0.26		172

## OPTIONS

### Planetary Gearbox



### Inline Helical Gearbox



### Worm Gearbox



### Thermal switch Protection



### Special Shaft



More Customisation options on request

# SWITCHGEAR/ DISCONNECTOR MOTORS

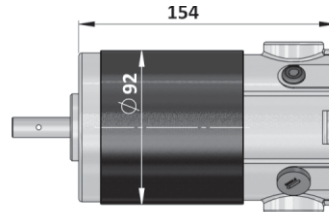
These customized motors are specially built with very compact dimensions for intermittent operation. Very high starting torque and very good regulation make these motors superior to universal motors.

## ADVANTAGES

- V**ery high starting torque
- O**peration till 60% voltage
- H**igh regulation
- B**rushes last lifetime



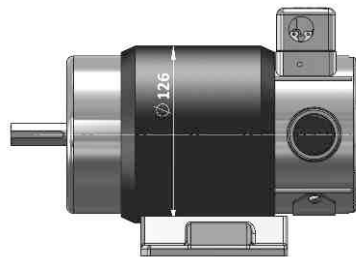
**AB SERIES**



Power (KW)	Voltage	Speed (RPM)
Up to 0.75	90V- 110V- 220V	Up to 4000



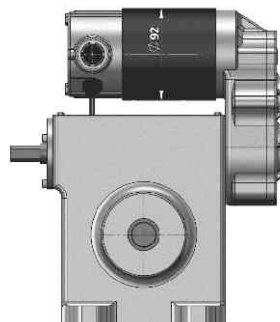
**M SERIES**



Power (KW)	Voltage	Speed (RPM)
Upto 1	90V-110V-220V	Up to 4500



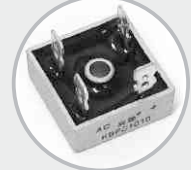
**SS SERIES**



Power (KW)	Voltage	Speed (RPM)
0.18 & 0.37	90V-110V- 220V	2.6

## OPTIONS

**Rectifier**



**Special connectors**



**Worm Gearbox**



**Inline Helical Gearbox**



**Planetary Gearbox**



**Special Shaft**



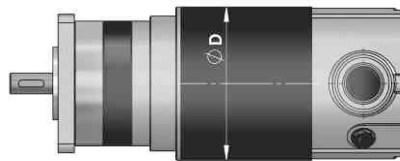
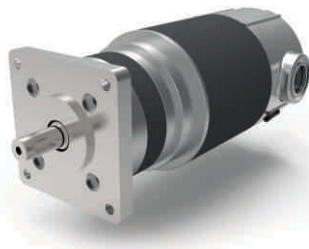
**More Customisation options on request**

# HOIST AND WINCH MOTORS

Motors for marine winches and hoists are made for S2 intermittent duty and special features to withstand very high starting current. Bodies are powder coated to withstand the corrosive effects of the humid marine environment.

- ### ADVANTAGES
- Rugged brush holders
  - High conductivity brushes
  - Very high starting current
  - Brazed winding joints
  - Powder coated externally

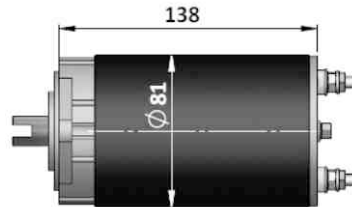
## PLANETARY GEARED MOTOR



### AB/HK SERIES

Ratio: 3, 4, 9, 16, 27, 64  
Foot, Face, Flange Options  
Available in TENV-TEFC-SPDP

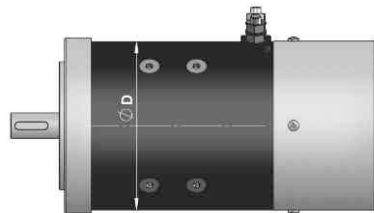
Power (KW)	Voltage	D	Speed (RPM)
0.08 to 0.18	12V-24V-	89	20 to 200
0.15 to 0.75	36V-48V	114	



### G SERIES

PM Motor Protection: IP-44  
S2-S3 Duty cycle

Power (KW)	Voltage	Speed (RPM)
0.15 to 0.8	12V-24V	1500 to 4500



### HP-BT SERIES

Series /Compound wound Motor  
Protection: IP-44, IP-20  
S2-S3 Duty cycle

Power (KW)	Voltage	D	Speed (RPM)
0.08 to 2.2	12V-24V	114	1500 to 4500
1 to 3		125	

## OPTIONS

### Brake



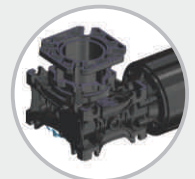
### Inline Helical Gearbox



### Worm Gearbox



### Blackodized Components



### Canopy



### Special Mounting



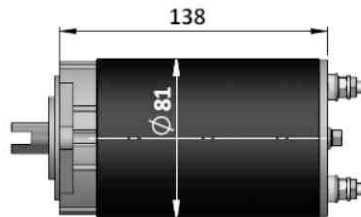
**More Customisation options on request**

# MOTORS FOR HYDRAULIC POWER PACKS

These motors are available in Series and Compound version and have superior build quality. Option of different shaft and without drive end shield is available. Use of rugged brush holders results in cooler operation of the motors.

## ADVANTAGES

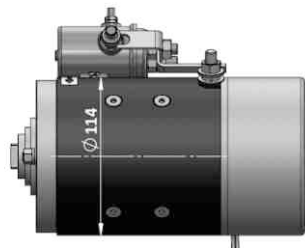
- High starting torque
- Silent and smooth operation
- Longer brush life
- Powder coated shells-resistant to corrosion



### G SERIES

PM Motor  
Protection: IP-44  
S2-S3 Duty cycle

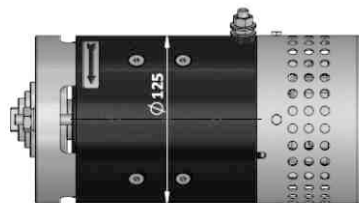
Power (KW)	Voltage	Speed (RPM)
0.15 to 0.8	12V-24V	1500 to 4500



### HP SERIES

Type: Compound, Series, Shunt  
Protection: IP-44, IP20  
S2-S3 Duty Cycle

Power (KW)	Voltage	Speed (RPM)
0.6 to 2.2	12V-24V	1500 to 4500



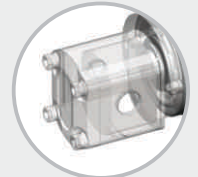
### BT SERIES

Type: Compound, Series, Shunt  
Protection: IP-44, IP20  
S2-S3 Duty Cycle

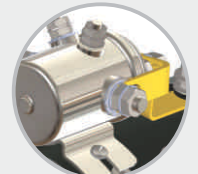
Power (KW)	Voltage	Speed (RPM)
1.5 to 4	12V-24V	1500 to 4500

## OPTIONS

### Pump Mountings



### Starting Switch



### Brake



### Thermal Switch Protection



### Special Shaft



### Special Mountings



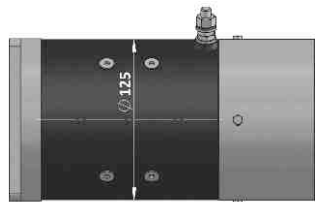
More Customisation options on request

## MOTORS FOR MATERIAL HANDLING

Traction motors are designed for continuous operation and also momentary over-loads and have high starting torque. Oversized brushes result in high brush life and the brushes are easy to replace. Terminals are of extruded brass or copper.

## ADVANTAGES

- S**mooth and silent operation
- L**ong life brushes
- E**asy brush replacement
- S**KF ball bearings



### BT SERIES

Type: Compound, Series, Shunt  
Protection: IP-44, IP20  
S2-S3 Duty Cycle

Power (KW)	Voltage	Speed (RPM)
1.5 to 4	12V-24V	1500 to 4500



### FT SERIES

Type: Compound, Series, Shunt  
Protection: IP-44, IP20  
S2-S3 Duty Cycle

Power (KW)	Voltage	Speed (RPM)
1.5 to 4.5	12V-24V-36V-48V	1500 to 4500



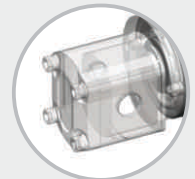
### HW SERIES

Type: Compound, Series, Shunt  
Protection: IP-44, IP20  
S2-S3 Duty Cycle

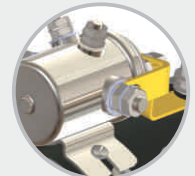
Power (KW)	Voltage	Speed (RPM)	D
1.5 to 8	12V-24V-	1500 to 4500	180
3 to 13	36V-48V		192

## OPTIONS

### Pump Mountings



### Starting Switch



### Brake



### Thermal Switch Protection



### Special Shaft



### Special Mountings



**More Customisation options on request**



**WORLD OF D. C. MOTORS**

**ROTOMAG MOTORS &  
CONTROLS PVT. LTD.**

2102/03 & 04, Vitthal Udhyognagar,  
Near Anand, Gujarat-388121, India.

Phone: +91-9227110023/24/25

Fax : +91-2692-239805

Email : sales@rotomag.com

Web : www.rotomag.com